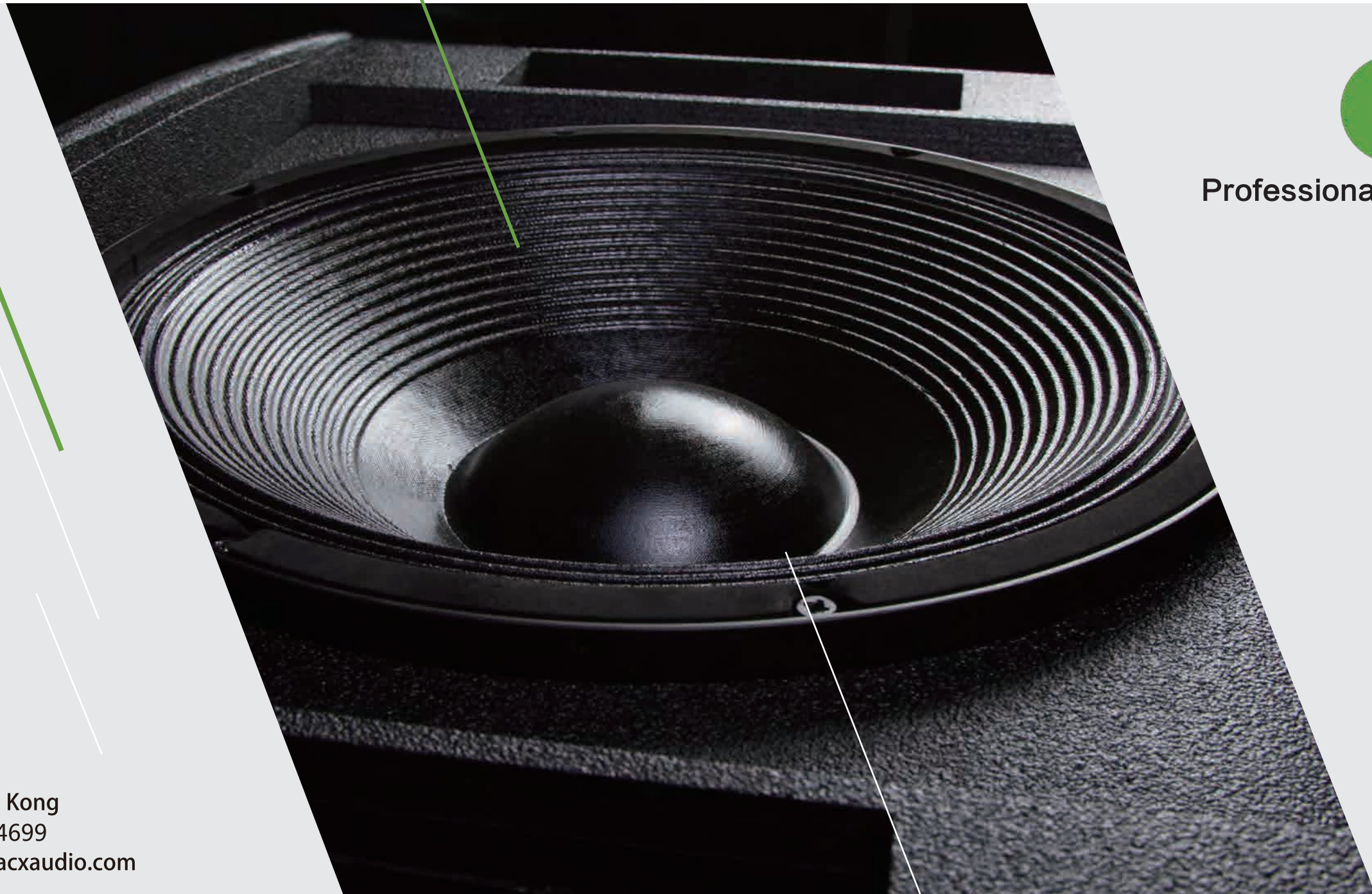




ACX Audio Design
Johann-Ehrens-Str.12
49762 Fresenburg, Germany
Tel: +49 (0) 5933-923735
Fax: +49 (0) 5933-923736

Asia Office
Unit 14 10/F Kwai Cheong Center
50 Kwai Chong Road, Kwai Chung, Hong Kong
Tel: +852 2604 9382 Fax: +852 2617 4699
<http://www.acxaudio.com> Email: tim@acxaudio.com



Professional Audio System





ACX

Petite Performance is Beyond Imagination

Professional audio with wide range, high sound pressure. its existence cannot be "ignored".
CS series is born with slender stature and meets modern architecture.
Excellent to be used in conference rooms, lecture halls, exhibitions, courts, classrooms,
shopping malls, seminars or private clubs.
Variety of installation combinations to choose from, with angle adjustable hanging accessories
making it able to be applied freely on any environment.



DM22

Dual circuit microphone with Dante

Xilica has advanced far beyond in technology of Audio, Control, IT integration, whereas fixed installation nowadays requires a complete technical solution instead of a single device.

DM22 is a desktop–dual circuit microphone which integrates and transfers high quality Dante network audio. It is the key to a full system for Xilica audio, existing now a media matrix, power amplifier, column loudspeaker, all these with Dante.

DM22 is powered via PoE. Improving the system flexibility under some simple installation, DM22 configures with Dante module, high sound quality, little delay in long distance transmission, is an ideal option for pursue of HD audio.

DM22 integrated in the XilicaDesigner software library, installed on iOS and Windows computer, to achieved the system debug and control. The XilicaDesigner not only can control Xilica’ s FR, QR, Neutrino, Uno, CM series Media Matrix, but can also design a network audio transmission tracks to XPower Class D switching power supply Amplifier with Dante protocol, or can transmit to the CS series column loudspeaker for sound reinforcement. The whole system can ride freely on Dante's network signal. Furthermore, XilicaDesigner can control a third party device, such as projector, fire alarm signal and so on. Implement with the Mini Panel, the user who are unfamiliar with our control system can freely control through iPad, iPhone, Android or PC.

MD22 overall design is very modernized, microphone's outter LED indicates on/off of the microphone. No matter the occasion, or any large conference of numerous of attendents, Xilica’ s audio system can easily handle and provide the excellent sound quality, meets the needs of all your applications.

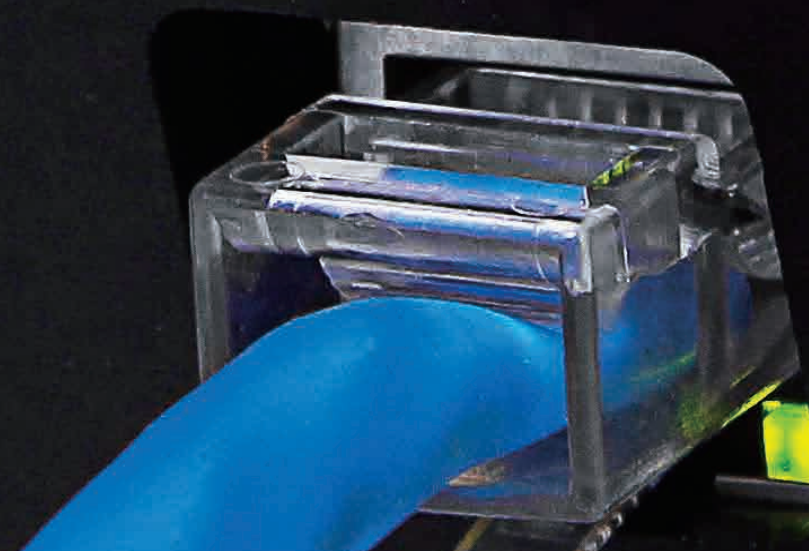




Features:

- ◇ Dual circuit microphone design, electrets capacitive heart-shaped single-directional microphone
- ◇ Best Anti-disturb ability, simple, fast installation
- ◇ Elegant structure design, meets modern engineering, very modern
- ◇ Built-in pre-power supply and amplifier components on the head, external connect with PoE interchanger to work
- ◇ Design for conference, television broadcast, professional audio recording and other applications in need of high quality system
- ◇ Built-in high quality and low frequency damping circuit, easily cut to under 80Hz frequency smoothly. It can reduce the sniffing sound received when speech at a close range, the environment noise, and also the echo in the room and mechanical vibration sound
- ◇ Integrated to the XilicaDesigner device library, a drag and drop design software, cooperate with other Xilica product
- ◇ On Dante audio network, can expand to 512 two-way audio channel

 **Dante™**
POE Powered

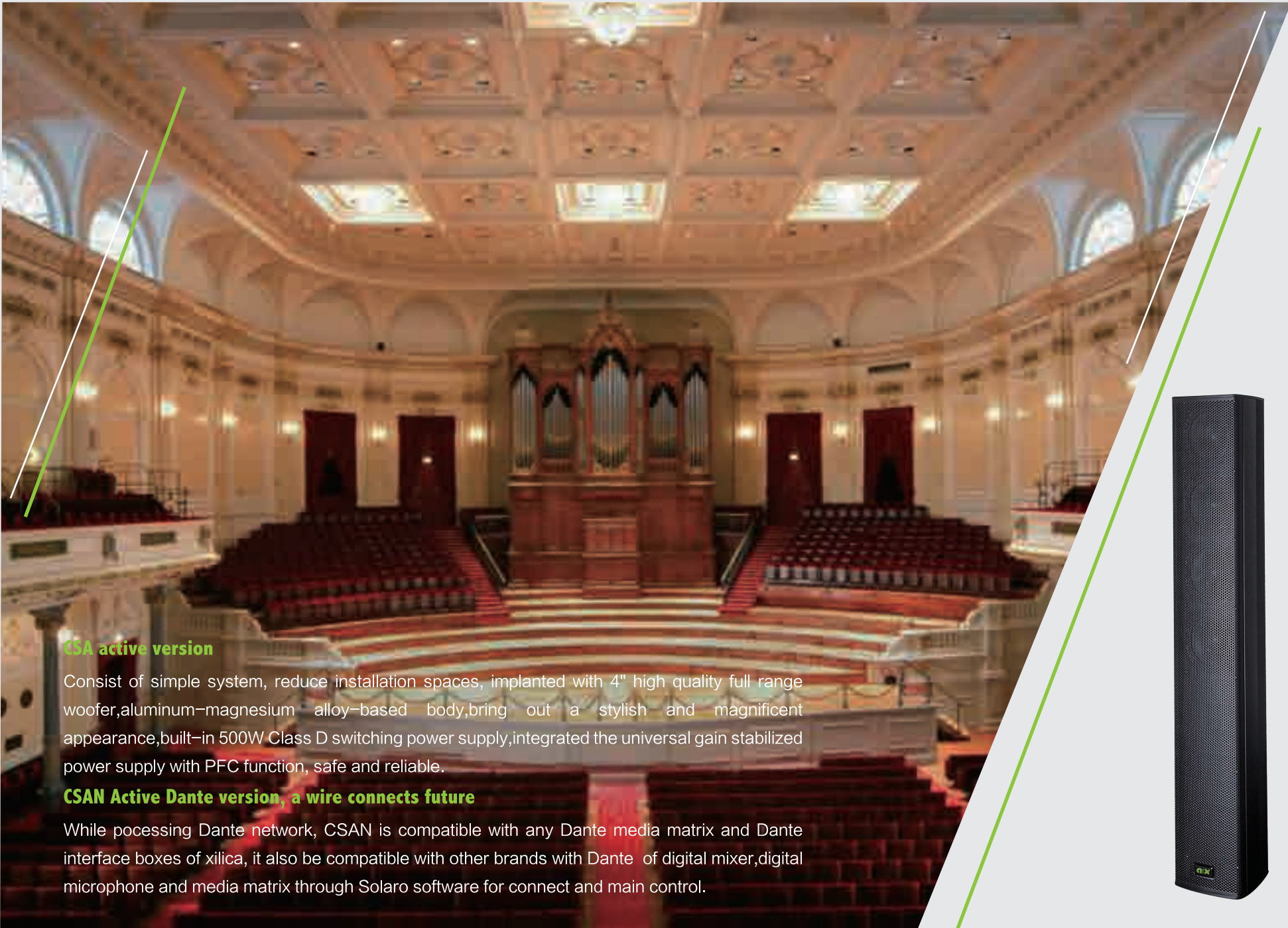


CS 4” Passive Column

With a beautiful design, high quality components, focusing on language and sound reinforcement, CS column loudspeaker is undoubtedly be the best choice.
Provides simple and powerful solutions for all kinds of fixed installations sound reinforcement system.

Model	CS401	CS402	CS404	CS408
Components	1 × 4”	2 × 4”	4 × 4”	8 × 4”
Freq. Resp.	100Hz–20KHz		90Hz – 20KHz	
Sensitvity	91dB	94dB	97dB	100dB
Max SPL	106dB	112dB	118dB	124dB
Coverage	120° × 90°			
Imp.	8 Ω		4 Ω	8 Ω
(AES)	30W	60W	120W	240W
Input	Screw Terminal x 1		Neutrik SpeakON x 2, Euro Block x 1	
Color	Black / White			
Accessories	Wall		Wall / Hanger	
W×D×H(mm)	138×142.7×138	140×160×380	140×160×790	140×160×1340
Net Weight	1.8kg	4.2kg	7.8kg	13.2kg





CSA active version

Consist of simple system, reduce installation spaces, implanted with 4" high quality full range woofer,aluminum–magnesium alloy–based body,bring out a stylish and magnificent appearance,built–in 500W Class D switching power supply,integrated the universal gain stabilized power supply with PFC function, safe and reliable.

CSAN Active Dante version, a wire connects future

While pocessing Dante network, CSAN is compatible with any Dante media matrix and Dante interface boxes of xilica, it also be compatible with other brands with Dante of digital mixer,digital microphone and media matrix through Solaro software for connect and main control.

CSA 4” Active Column
CSAN Active Column with Dante

Model	CS404A CS404AN	CS408A CS408AN
Components	4 × 4”	8 × 4”
Sensitvity	97dB	100dB
Freq. Resp.	90Hz – 20KHz	
Max SPL	118dB	124dB
Coverage	120° × 90°	
Power Amp	500W	
Power	90V–240VAC	
Parallel Input	CSA – Neutrik XLRx1 / PowerCONx1 CSAN: Neutrik EtherCON x 1 / PowerCON x 1	
Output	XLR x 1	
Color	Black / White	
Accessories	Wall / Hanger	
W × D × H(mm)	140 × 160 × 790	140 × 160 × 1340
Net Weight	CS404A 8.8kg CS404AN 8.9kg	CS408A 14kg CS408AN 14.2kg

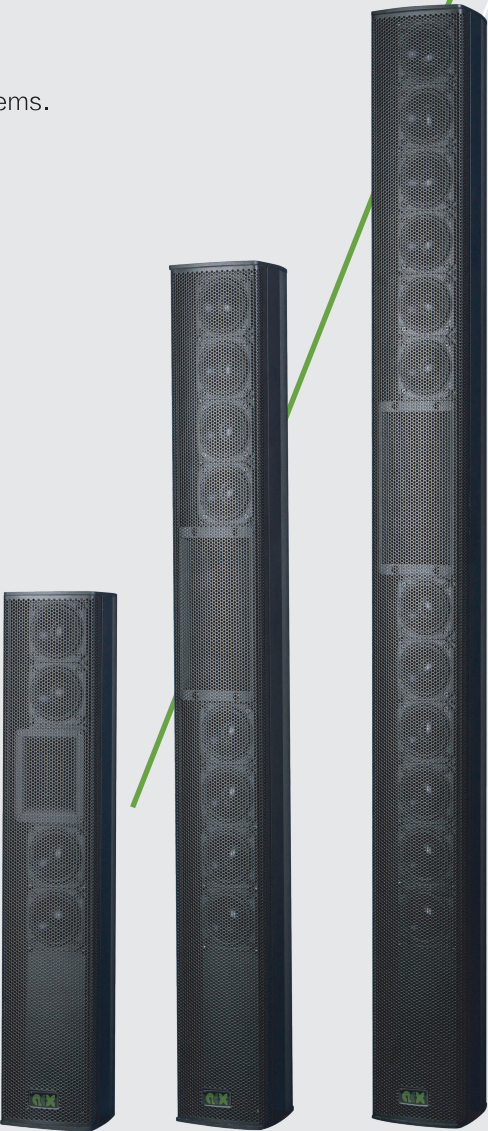


CS 3” Passive Column

CS Passive Speaker, Easy to Use, Traditionally Stable, Economical and Durable

Its ultra-compact size allows the entire system to run efficiently and provides a simple yet effective solution for a variety of fixed sound reinforcement installation systems.

Model	CS342	CS382	CS3122
Compoents	4 × 3” bass 3” treble	8 × 3” bass 4” treble	12 × 3” bass
Freq. Resp.	110Hz–20KHz		
Sensitivity	94dB 1W/1M	96dB 1W/1M	98dB 1W/1M
Max SPL	114dB	119dB	122dB
Cover	90° × 40°		
Imp.	8 Ω	4 Ω	
Pow.	100W	200W	300W
Input	speakON × 2 / Euro Block × 1		
Color	Black/White		
Accessories	Wall/Hanger		
W × D × H(mm)	124 × 148 × 660	124 × 148 × 1072	124 × 148 × 1382
Net Weight	6.3 kg	11.1 kg	14.1kg



Minimize The Size

Aluminum–magnesium alloy–based body, implanted with 3" woofer along with 3" and 4" aluminum treble, brings out a stylish and magnificent appearance. Unlike regular speaker designs, CS selection of the aluminum treble maximizes its performance on wonderful sound quality and smooth treble. It is excellent in medium–sized application.



CSA 3" Active Column

CSAN Active Column with Dante

Model	CS342A CS342AN	CS382A CS382AN	CS3122A CS3122AN
Compoents	4 × 3” bass	8 × 3” bass	12 × 3” bass
	3” treble	4” treble	
Freq. Resp.	110Hz–20KHz		
Max SPL	114dB	119dB	122dB
Cover	90° × 40°		
Power Amp	250W	500W	
Power	90V – 240V AC		
Input	CSA: XLR × 1 / powerCON × 1 CSAN: etherCON × 1 / powerCON × 1		
Output	XLR × 1		
Color	Black/White		
Accessories	Wall/Hanger		
W × D × H(mm)	124 × 148 × 660	124 × 148 × 1072	124 × 148 × 1382
Net Weight	CS342A – 6.8kg CS342AN – 7kg	CS382A – 11.6kg CS382AN – 11.8kg	CS3122A – 14.6kg CS3122AN – 14.8kg

CSAN 3" Active Column with Dante, Connecting the Future

While possessing Dante network, CSAN is compatible with any Dante media matrix and Dante interface boxes of Xilica. It is also be compatible with other brands with Dante protocol, digital microphone and media matrix through Solaro software for main connection and control.

CSA 3" Active Column, Easy System Setup, Conserve Space

Built-in, by Denmark, 2-channel active switching power supply, the speaker can possess two channels of 500W Class D amplifier. Its compact size allows the overall system to run more efficiently. In addition with integrated PFC function of the universal gain regulated power supply, making it safe and reliable.



CS 2” Passive Column

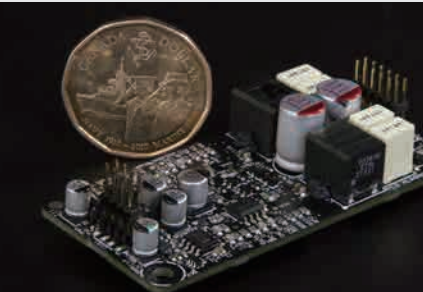
2 " Series: mini version of the previous series, yet possesses amazing energy and sound. 2" woofer with a 1" dome tweeter. It is slim, light; very suitable for small and medium-sized fixed installation.

Model	CS242	CS282	CS2122
Compoents	4 × 2” bass 1 × 1” dome tweeter	8 × 2” bass 2 × 1” dome tweeter	12 × 2” bass
Freq. Resp.		120Hz–20KHz	
Sensitivity	89dB 1W/1M	92dB 1W/1M	95dB 1W/1M
Max SPL	107dB	113dB	118dB
Cover		90° × 30°	
Imp.	4Ω	8Ω	12Ω
Pow.	60W	120W	180W
Input	speakON × 2 / Euro Block × 1		
Color	Black/White		
Accessories	Wall/Hanger		
W × D × H(mm)	79 × 83 × 548	79 × 83 × 860	79 × 83 × 1124
Net Weight	3.3kg	5kg	6.3kg

CS 2” Active Column

Has a satellite channel power output, able to drive another similar size speaker, simplifying the setup. The module is compact, yet have sufficient energy output, providing a safe and efficient system configuration.

Model	CS242A	CS282A
Compoents	4 × 2” bass 1 × 1” dome tweeter	8 × 2” bass 2 × 1” dome tweeter
Freq. Resp.	120Hz–20KHz	
Max SPL	107dB	113dB
Cover	90° × 30°	
Power Amp	120W	
Sat. Freq. Resp.	20Hz–20KHz	
Sat. Power	60W	
Power	90V – 240V AC, 24V DC	
Input	Combo × 2 / DC Socket × 1	
Output	speakON × 1	
Color	Black/White	
Accessories	Wall/Hanger	
W × D × H(mm)	79 × 83 × 548	79 × 83 × 860
Net Weight	3.8kg	5.5kg





Maximize The Possibility

In response to the need for full-length frequency performance, ACX also developed subwoofers to pair up with the column speakers,getting the most out of audio performance in any way possible. Optional Class D amplifier, the built-in satellite-channel power output can drive multiple full-frequency columns. This design not only able to simplify the setup, it reduces the cost and help provides better solutions.

CSBA 8” Active Sub-woofer

CSBA, 8" subwoofer with built-in integrated Class H amplifier able to punch your heart out; flat frequency response of **38Hz – 120Hz (± 10dB)** including two satellite channels of power output with each up to **160W @ 4Ω** of energy.

Model	CSBA
Compoents	1 × 8 ” bass
Freq. Resp.	20Hz–120Hz
Max SPL	115dB
Power Amp.	200W
Sat. Freq. Resp.	110Hz–20KHz
Sat. Power	2 × 160W @4Ω
Power	115V / 230V AC
Input	Euro Block × 2 / RJ45 × 1
Output	Euro Block × 2
Color	Black
Accessories	Chassis stand
W × D × H(mm)	250 × 718 × 419
Net Weight	27kg





CSBA Active Sub-woofer

CS12BA / CS15BA

Built-in two Class D amplifier with high efficiency and very low distortion; possesses active bass power output, can drive up the passive speakers with **500W @ 4Ω**; further simplifying the system setup making your audio performance more efficient and smooth.

Model	CS12BA	CS15BA
Compoents	1 × 12” bass	1 × 15” bass
Freq. Resp.	45Hz–250Hz	42Hz–200Hz
Max SPL	122dB	125dB
Power Amp.	500W	
Sat. Freq. Resp.	110Hz–20KHz	
Sat. Power	1 × 500W @4Ω	
Power	90V – 240V AC	
Input	XLR × 1 / powerCON × 1	
Output	speakON × 1 / poweCON × 1	
Color	Black	
Accessories	Chassis stand	
W × D × H(mm)	480 × 525 × 425	660 × 690 × 480
Net Weight	27.9kg	34.8kg





CSB Passive Sub-woofer

CS12B / CS15B

Subwoofer with models of **12”** or **15”** ; tremendously expanded the range of bass in column speakers so that your sound reinforcement system performs more wonderfully. In addition, it is also compatible with music reinforcement, filled with rich features.

Model	CS12B	CS15B
Compoents	1 × 12” bass	1 × 15” bass
Freq. Resp.	45Hz–250Hz	42Hz–200Hz
Sensitivity	95dB 1W/1M	97dB 1W/1M
Max SPL	122dB	125dB
Imp.	4Ω	
Pow.	500W	700W
Input	speakON × 2	
Color	Black	
Accessories	Chassis stand	
W × D × H(mm)	480 × 445 × 425	660 × 610 × 480
Net Weight	26kg	32.5kg



CL Ceiling Speaker

The CL4.0 and CL6.5 ceiling speakers have a cavity design giving them excellent dynamics and sound quality. They can be used with ACX XPower series Class D switching power amplifiers for those who need high quality in background music, public broadcasting, conference expansion and other distributed systems.



Model	CL4.0	CL6.5
Components	1 × 4” bass	1 × 6.5” bass
	1 × 1” treble	
Freq. Resp.	90 ± 3dB	
Max SPL	104dB	105dB
Coverage	110°	120°
Sensitivity	110 – 20K Hz	60 – 20K Hz
Power Seleccion	100V:25W/12W	70V:25W/12W & 8Ω
AES	25W	30W
Connectors	Input Port: 4 Pin Phoenix	
Color	White	
Hole for Mounting	Φ 180	Φ 240
Dim. (mm)	Φ 200 x 110	Φ 267 x 162
Net Weight	2.55 kg	2.9 kg

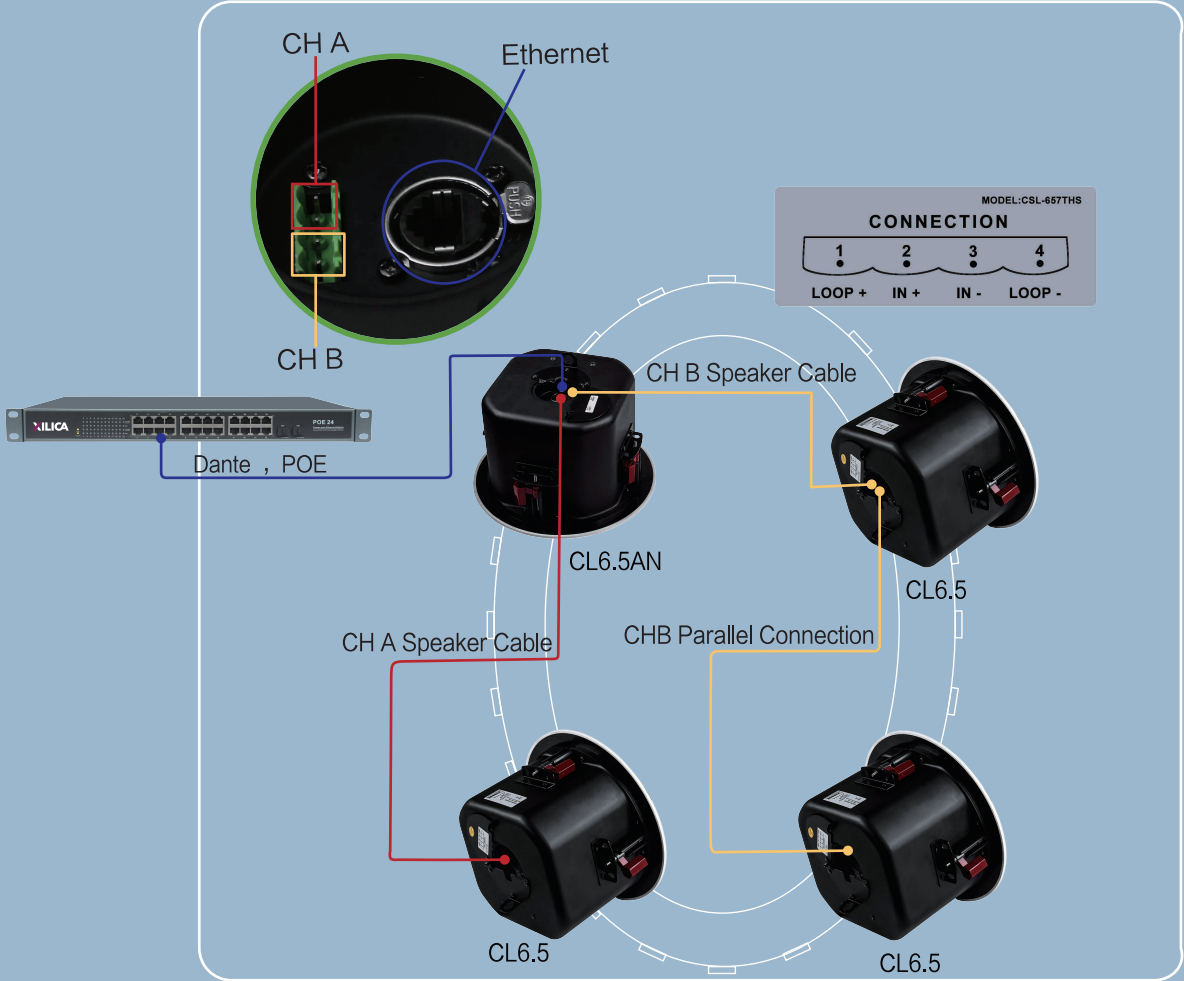
CL Active Ceiling Speaker w/ Dante

Model	CL4.0AN	CL6.5AN
Components	1 × 4" bass 1 × 1" treble	1 × 6.5" bass
Freq. Resp.	90 ± 3dB	
Max SPL	104dB	105dB
Coverage	110°	120°
Sensitivity	110 – 20K Hz	60 – 20K Hz
Imp	8Ω	
AES	25W	30W
Power Amp.	2 x 45W	
Connectors	Input Port: Dante x 1	
	Output Port: Phoenix x 2 (can drive CH A,B output) CH A connects one speaker, CH B connects 2 speakers	
Power Input	POE	
Color	White	
Hole for Mounting	Φ 180	Φ 240
Dim. (mm)	Φ 200 x 110	Φ 267 x 162
Net Weight	2.25 kg	2.6 kg



The CL4.0AN and CL6.5AN added a Dante network audio input interface and POE-powered dual-channel Class D 2 x 45W amplifiers to them. They both can be controlled by Xilica Designer software, and paired with Neutrino, UNO, CM, MC series with Dante network audio media matrix. One CL6.5AN (or CL4.0AN) can drive the other three CL6.5 (or CL4.0) ceiling. Dante network can receive 2 channels of audio signal input, which can be used for left and right channel stereo mode. A network cable completes the control/audio/power part, providing audio integrators with cost-effective and simple solutions while also providing the sound quality that is not available in general background music speakers.

The design of the ceiling cabinet is convenient for concealed installation. The bottom metal structure box enhances the low frequency performance of the loudspeaker. It extends the lower limit of the low frequency to 60Hz. The CL4.0 and CL6.5 can select 100V/700V or 8Ω low resistance input through the switch. Light spray paint, with magnetic iron cover, easy to disassemble.





Accessories

Rich accessories for your speakers and subwoofers help to deal with different occasions in anywhere anyhow. Plug and play, convenient and quick. Only require network cable for a group of active speakers and subwoofers, simple setup.

CS2WMB/CS3WMB

Wall Accessories

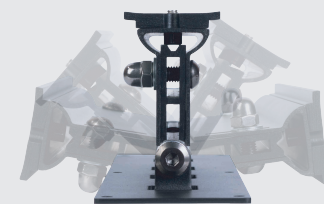
Flexible **CS2WMB / CS3WMB** allows you to install the speakers anywhere in any environment; variety of combinations in adjusting angle and height for different projection direction.



CS3WMB: Use in any way

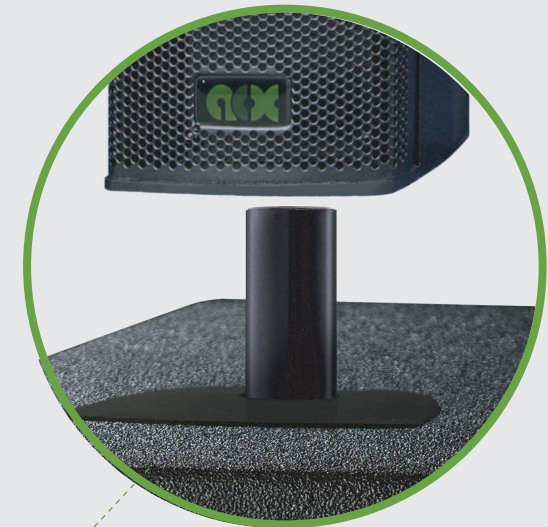


CS3WMB: Can tilt forward 5°



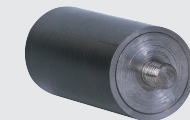
CS2WMB: Adjustable angle 142°

CS3WMB: Adjustable angle 120°



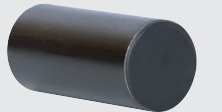
CSCP

3", 4" Connector



CS75 Bar

75mm connector between CSBA and 3" speaker



CS150 Bar

150mm connector between 12", 15" subwoofers and 3" speaker (applicable with only speakers themselves)



CSPM cork base
3", 4" Pole mount



CSFA

Column Speaker base connector

